

# JERSEY DIGS

Friday, November 13, 2020  
By: Chris Fry

## Lidl Sets Opening Date for Their Bayonne Market



***Lidl has announced that their latest market, located at 20 Goldsborough Drive, will hold its grand opening on Wednesday, November 18. Photo courtesy of Lidl.***

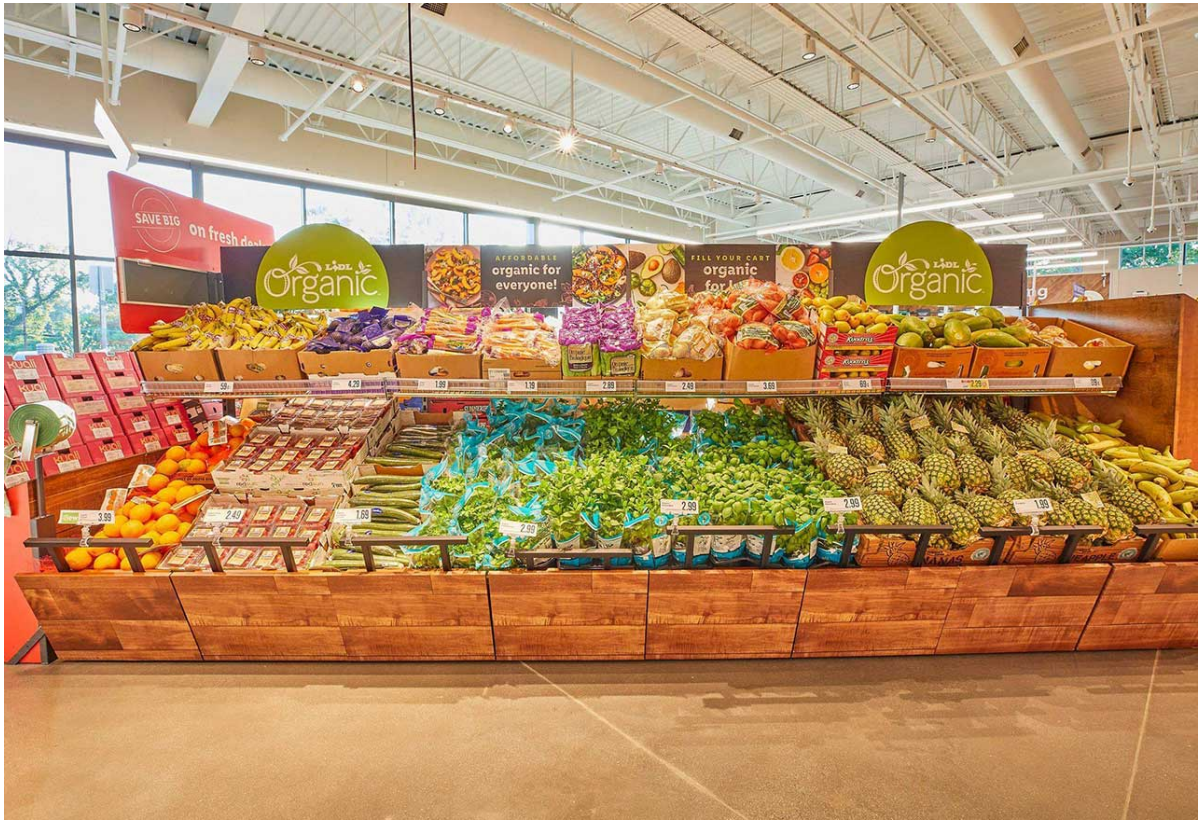
A grocer based in Germany will be adding yet another location to their Garden State portfolio with special giveaways during their grand opening next week.

Late last year, Jersey Digs [uncovered](#) plans from Lidl to bring a new store to the Peninsula City. The company has been hard at work building out space inside the Harbor View Marketplace, a recent development located along Route 440 and a short walk from the 34th Street Light Rail station.

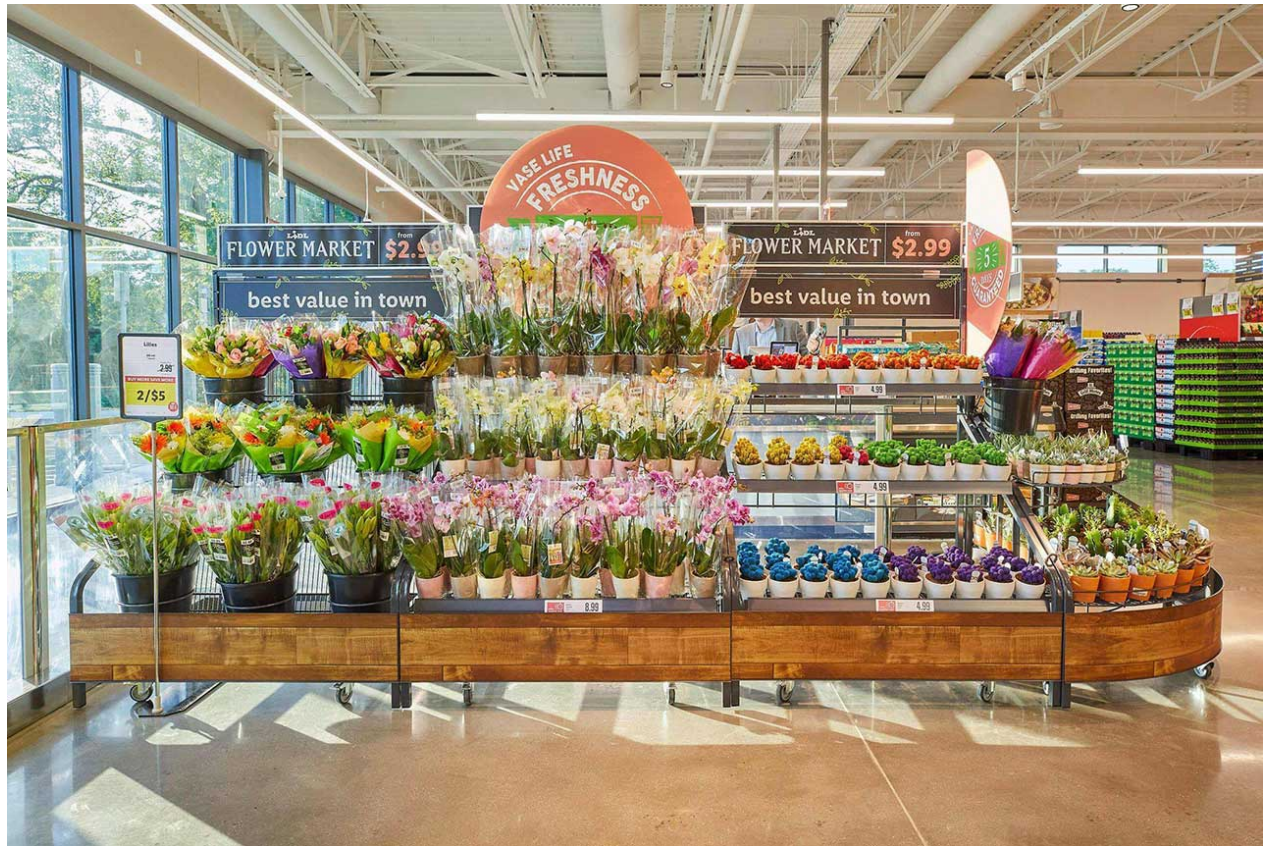
Lidl has announced that their latest market, located at 20 Goldsborough Drive, will hold its grand opening on Wednesday, November 18. The store will open at 8 a.m. following a brief ribbon cutting in front of the store.

"The City of Bayonne is happy to welcome Lidl to our community," said Bayonne Mayor Jimmy Davis. "Lidl's decision to set up shop in here is yet another sign that Bayonne is a great location for business. We are happy to provide a new American location for this important European retail company."









The Bayonne market's grand opening will feature several special offers and giveaways, with the first 100 customers at the store getting a gift card that will be valued anywhere from \$5 to \$100. Shoppers can also enter to win a \$500 Lidl gift card during the opening day festivities.

The newly built nature of Harbor View Marketplace allowed Lidl to design an easy-to-shop layout that creates a faster and more convenient experience. Customers will be greeted by the grocery's fresh bakery and in addition to American products, Lidl sells European specialty items ranging from hard-to-find cheeses to authentic specialty sauces and cured meats.

Lidl operates around 11,200 stores in 32 countries and has been rapidly expanding throughout America. The company established its U.S. headquarters in Virginia during 2015 and runs more than 110 stores across nine East Coast states.

The company has been significantly [expanding](#) their New Jersey presence over the last two years, opening markets in towns like Vineland, Hazlet, Union, Bergenfield, and Garwood. Lidl [took over](#) a former Acme Supermarket in Weehawken earlier this year.

The regular hours of operation for Lidl's Bayonne store will run from 8 a.m. to 9 p.m. seven days a week.